



ATELIER HÄUSER

**TABAK
QUARTIER**

Bremen - Woltmershausen

JUSTUS GROSSE
REAL ESTATE

Baujahr 1972

Bauwerk als Ensembleschutz

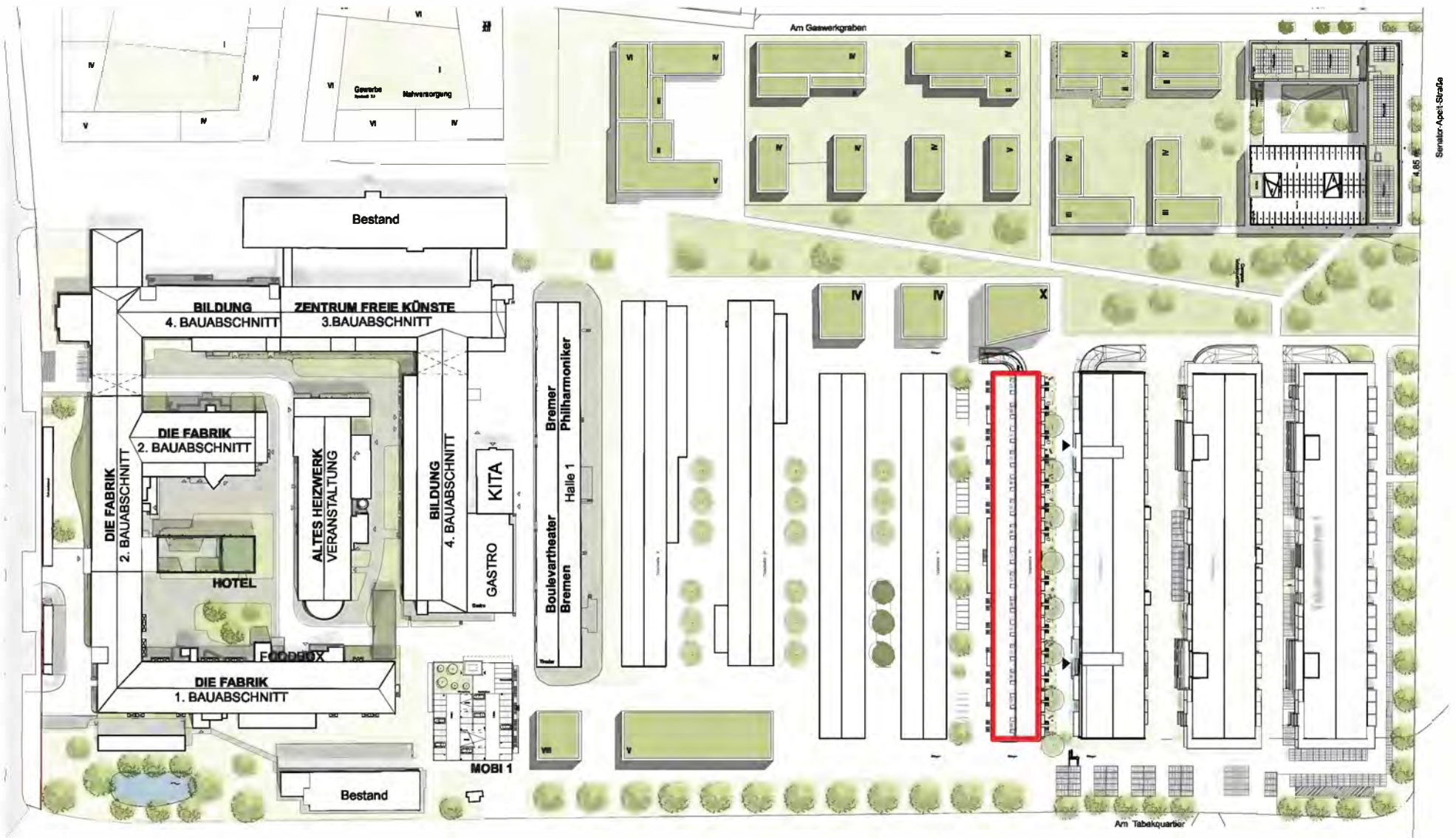
Nutzfläche = **6.885 m²** (oberirdisch)

BGF = **9.464 m²** (inkl. Tiefgarage)

Anzahl Lofts / Stellplätze = **30**



Eckdaten



Lageplan
M 1_1000



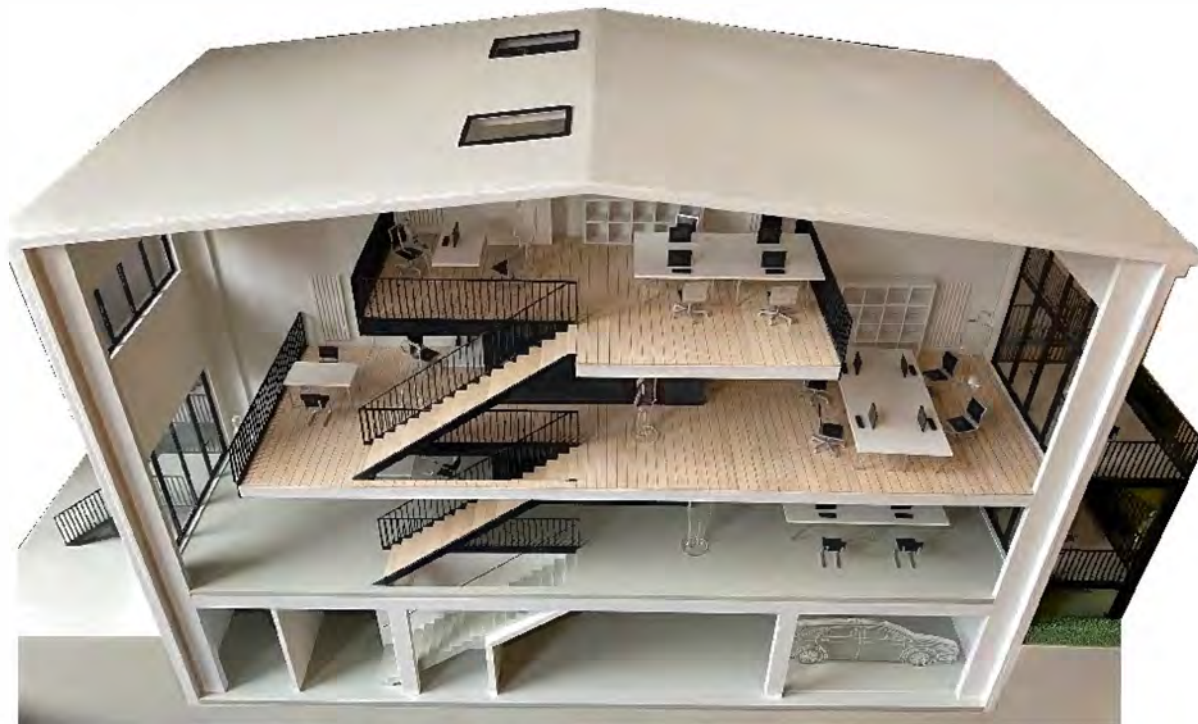




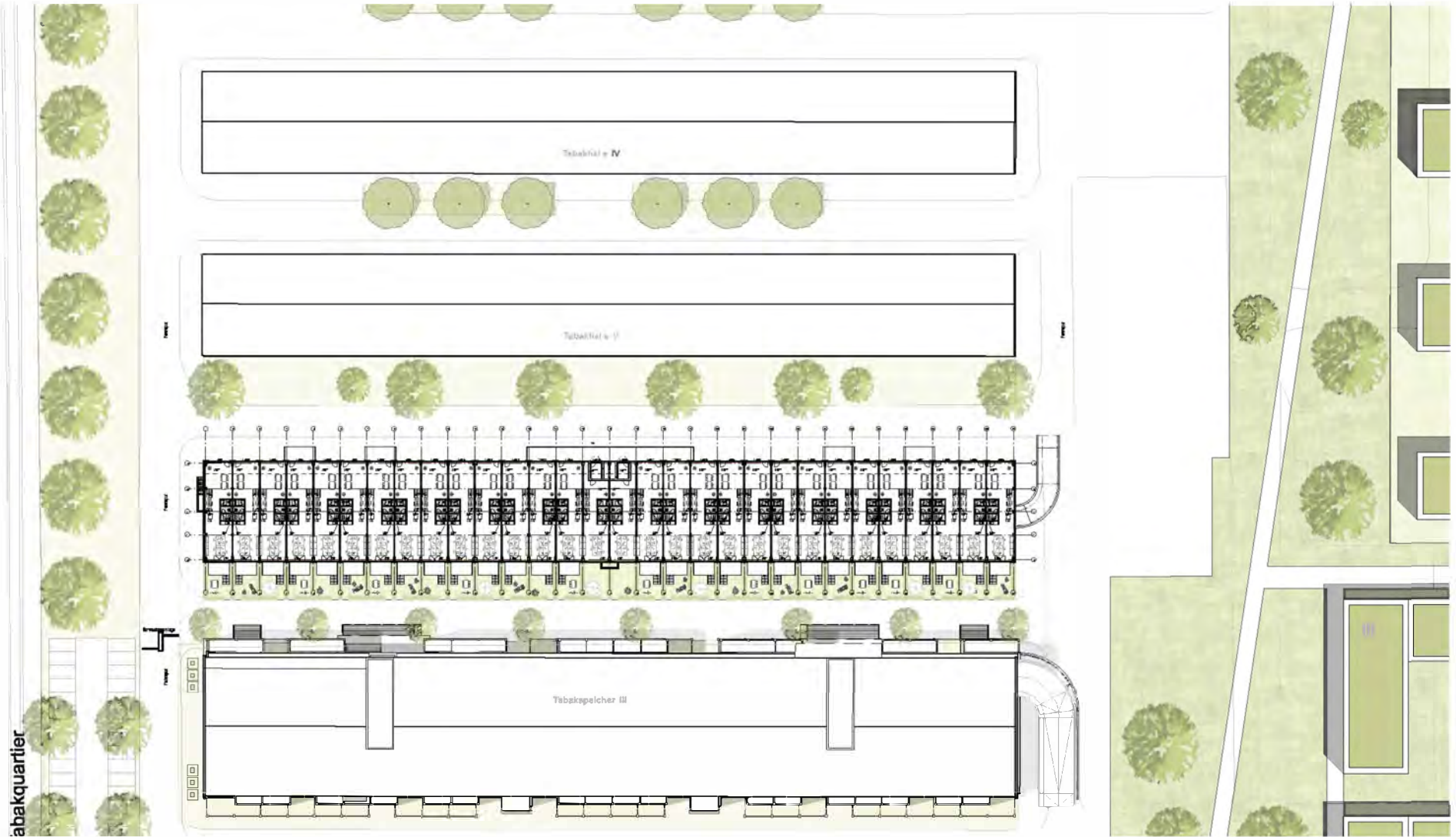




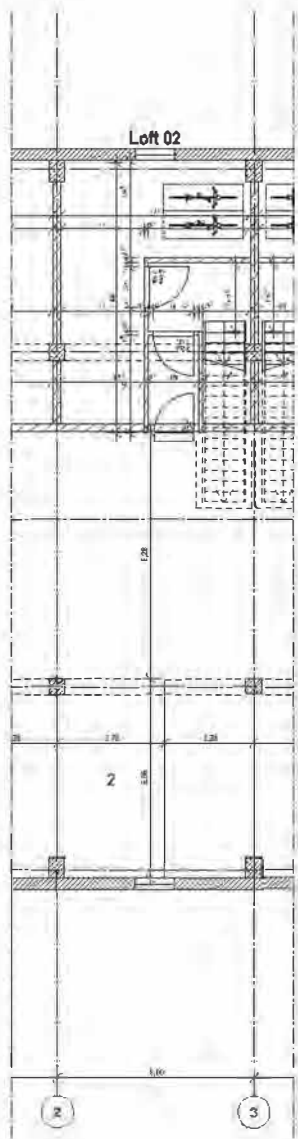
Modellfotos



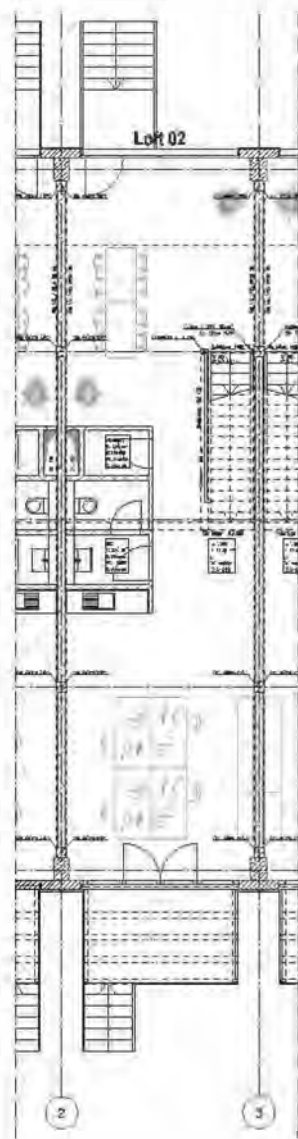
Modellfotos



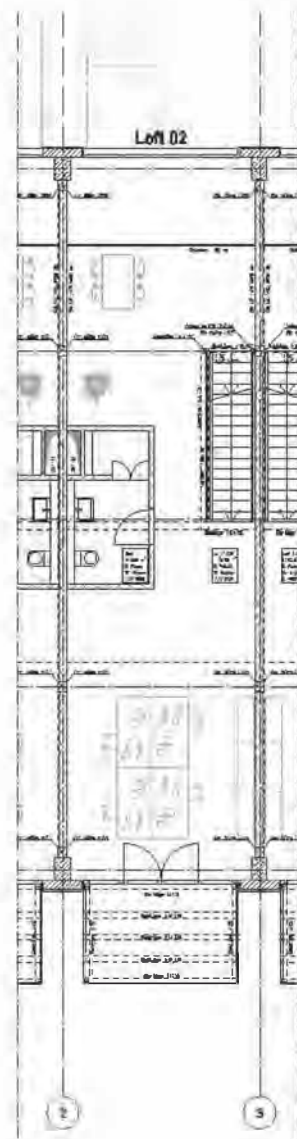
 Lageplan
M 1_1000



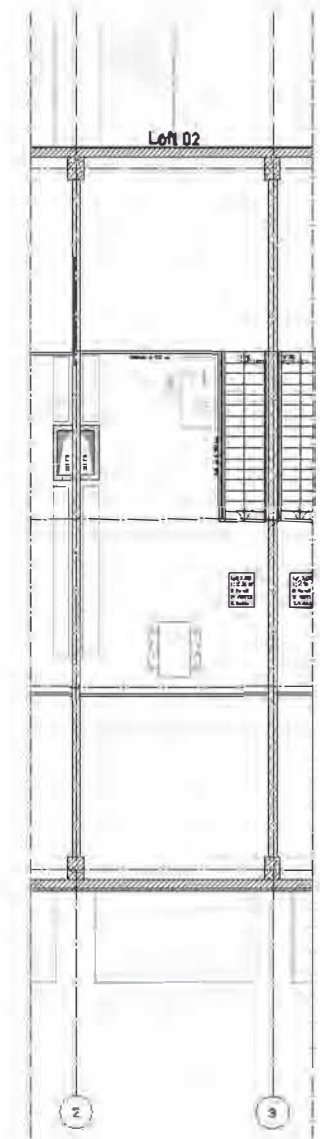
Untergeschoss



Erdgeschoss

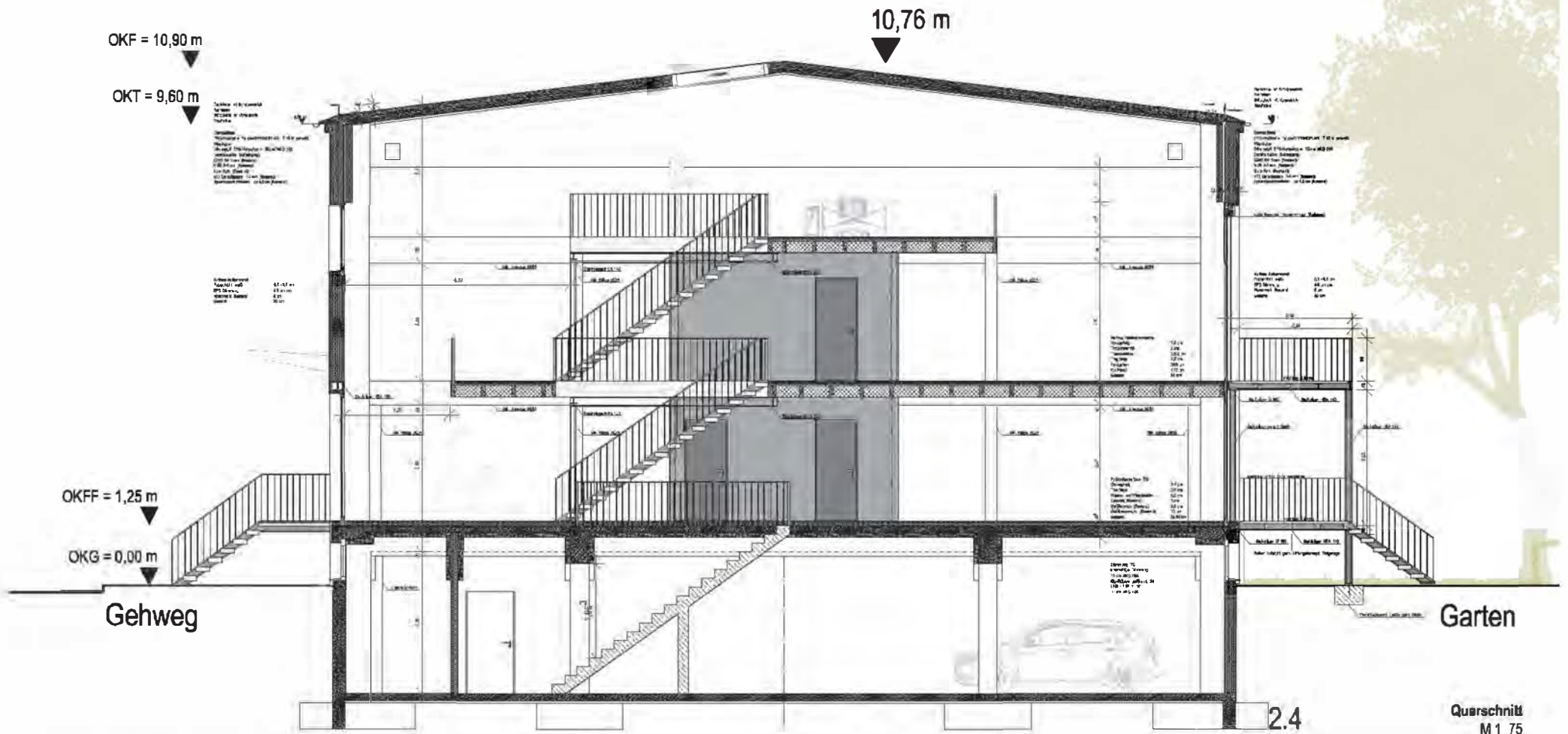


1. OG



2. OG

Grundrisse Auschnitt
M 1_125



OKF = 10,90 m

10,76 m

OKT = 9,60 m

OKFF = 1,25 m

OKG = 0,00 m

Gehweg

Garten

2.4

Querschnitt
M 1_75